

RECORDED AND VERIFIED

*Robert A. Baugher*  
CLERK CIRCUIT COURT  
BREVARD COUNTY, FLA.

This instrument prepared by:

Return →  
D.F.L.

JAMES W. PEEPLES III, ESQ.  
WOLFE, KIRSCHENBAUM & PEEPLES, P.A.  
P. O. Box 320757  
Cocoa Beach, Florida 32932-0757

AMENDMENT TO DECLARATION OF CONDOMINIUM OF  
BOARDWALK CONDOMINIUM

BOARDWALK DEVELOPMENT OF BREVARD CORP., a Florida corporation (the "Developer"), pursuant to the authority reserved in Article XIII of the Declaration of Condominium of BOARDWALK CONDOMINIUM, and in the Florida Condominium Act, hereby amend the Declaration of Condominium establishing BOARDWALK CONDOMINIUM, as recorded in Official Records Book 2532, Page 2402, of the Public Records of Brevard County, Florida, at Article II as follows:  
as follows:

Delete Sheets 5 through 9, of Exhibit A, and substitute therefor Sheets 5 through 9, of Exhibit A, attached hereto and incorporated herein by reference.

IN WITNESS WHEREOF, the Developer has caused this amendment to be executed and delivered this 31st day of March, 1988.

SIGNED, SEALED AND DELIVERED  
IN THE PRESENCE OF:

DEVELOPER:

BOARDWALK DEVELOPMENT OF BREVARD CORP.,  
a Florida corporation

*Deane M. Holmden*  
*James W. Peeples III*

By: *Robert A. Baugher*  
ROBERT A. BAUGHER, President

STATE OF FLORIDA )  
) ss:  
COUNTY OF BREVARD )

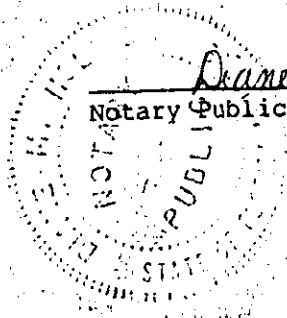
6  
PFS 3.50  
REC'D 25.00  
APR 5 1988  
CLERK CIRCUIT COURT  
BREVARD COUNTY, FLORIDA

BEFORE ME, the undersigned authority, duly authorized by law to take oaths and acknowledgments, personally appeared ROBERT A. BAUGHER, as President of BOARDWALK DEVELOPMENT OF BREVARD CORP., a Florida corporation, who after being first duly sworn, acknowledged before me that he executed the foregoing instrument as such officer for the reasons and purposes therein expressed.

WITNESS my hand and official seal in the county and state last aforesaid on this 31st day of March, 1988.

My commission expires:  
Notary Public, State of Florida  
1015p My Commission Expires Jan. 25, 1992  
Bonded By American Fidelity & Guaranty Company

*Deane M. Holmden*  
Notary Public



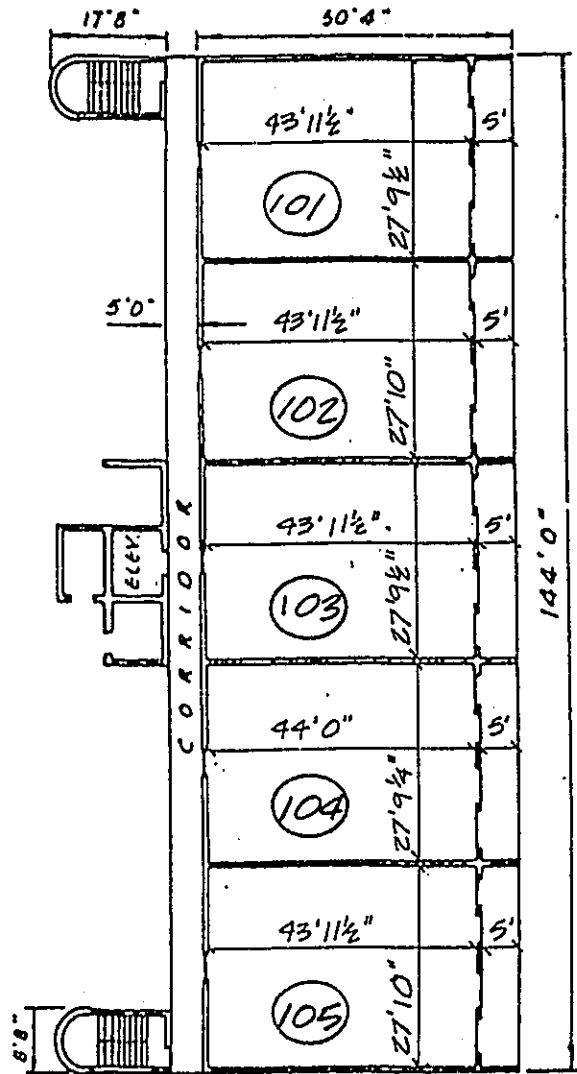
THIS DOCUMENT IS BEING RECORDED IN ORDER TO CORRECT A SCRIVENORS ERROR IN THE UNIT NUMBERS.

513683

88 JUN - 3 PM 1:14



BOARDWALK CONDOMINIUM  
A CONDOMINIUM



NOTES:

1. (101) INDICATES UNIT NUMBER.
2. FIRST FLOOR FINISHED FLOOR ELEVATION IS 17.16 FEET.
3. FIRST FLOOR FINISHED CEILING ELEVATION IS 25.16 FEET.
4. ELEVATIONS SHOWN HEREON ARE BASED ON NATIONAL GEODETIC VERTICAL DATUM.
5. ALL AREAS OF IMPROVEMENTS EXCLUSIVE OF THE UNITS AND THOSE AREAS SHOWN AS LIMITED COMMON ELEMENTS, ARE COMMON ELEMENTS OF THE CONDOMINIUM.
6. SEE SHEET 2 OF 11 FOR THE LOCATION OF THIS BUILDING WITHIN THE CONDOMINIUM.
7. SEE SHEETS 10 AND 11 OF 11 FOR TYPICAL UNIT PLANS.
8. BALCONIES SHOWN HEREON ARE LIMITED COMMON ELEMENTS FOR THE EXCLUSIVE USE OF THE UNITS CONTIGUOUS WITH SAID BALCONIES.

FIRST FLOOR PLAN

EXHIBIT "A"

JULY 23, 1984



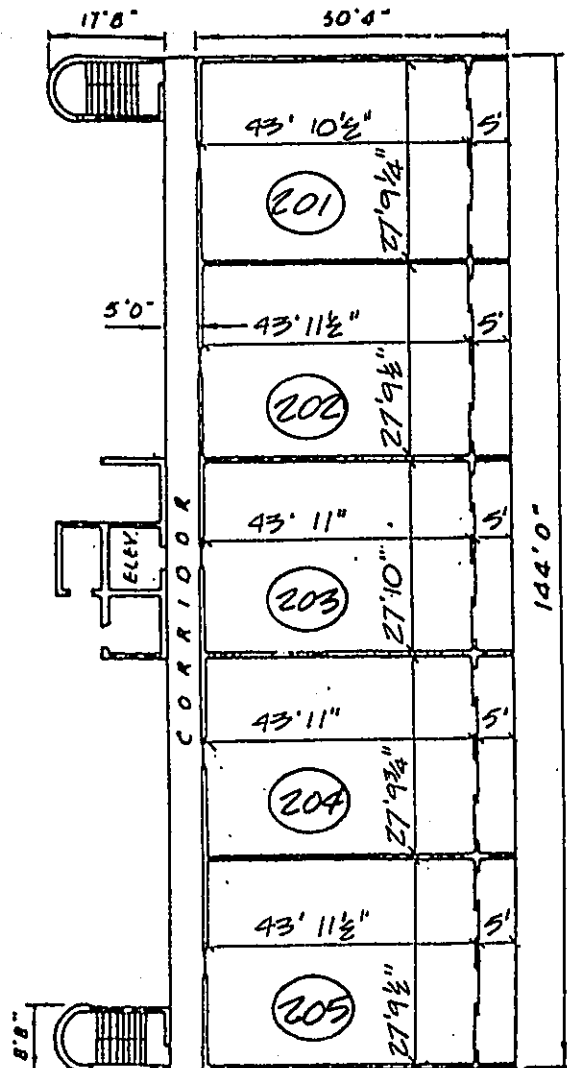
32 N. ORLANDO AVE.  
COCOA BEACH, FL. 32931  
305/788-1012  
OFF. REC.

PAGE

SHEET 5 OF 11

BOARDWALK CONDOMINIUM  
A CONDOMINIUM

SCALE 1" = 50'



NOTES:

1. (201) INDICATES UNIT NUMBER.
2. SECOND FLOOR FINISHED FLOOR ELEVATION IS 26.00 FEET.
3. SECOND FLOOR FINISHED CEILING ELEVATION IS 34.00 FEET.
4. ELEVATIONS SHOWN HEREON ARE BASED ON NATIONAL GEODETIC VERTICAL DATUM.
5. ALL AREAS OF IMPROVEMENTS EXCLUSIVE OF THE UNITS AND THOSE AREAS SHOWN AS LIMITED COMMON ELEMENTS, ARE COMMON ELEMENTS OF THE CONDOMINIUM.
6. SEE SHEET 2 OF 11 FOR THE LOCATION OF THIS BUILDING WITHIN THE CONDOMINIUM.
7. SEE SHEETS 10 AND 11 OF 11 FOR TYPICAL UNIT PLANS.
8. BALCONIES SHOWN HEREON ARE LIMITED COMMON ELEMENTS FOR THE EXCLUSIVE USE OF THE UNITS CONTIGUOUS WITH SAID BALCONIES.

SECOND FLOOR PLAN

EXHIBIT "A"

JULY 23, 1984

SHEET 6 OF 11



32 N. ORLANDO AVE.  
COCOA BEACH, FL. 32931  
305/799-1012

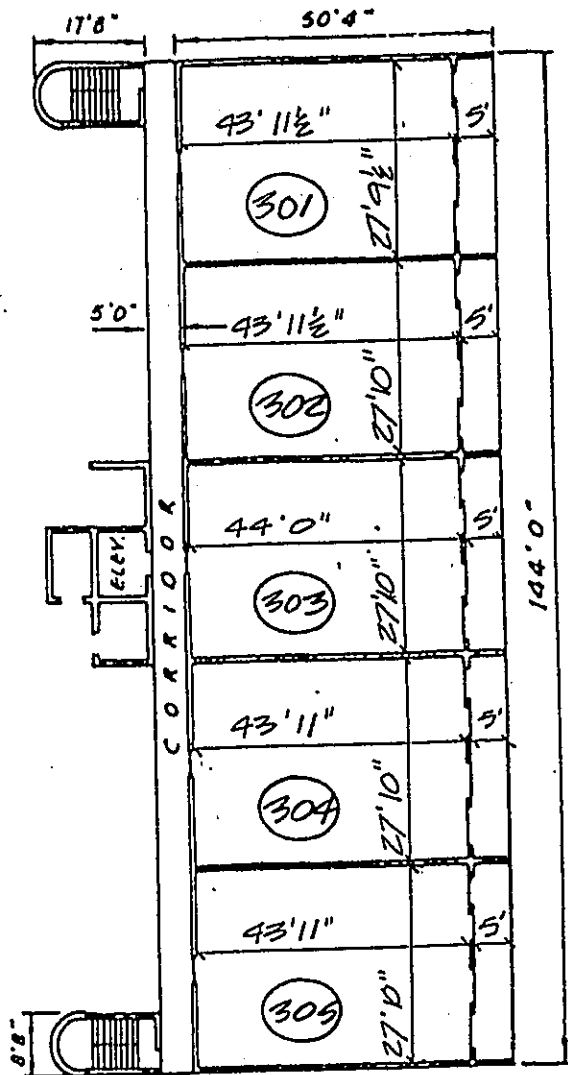
OFF. REC.

PAGE

2912

0256

BOARDWALK CONDOMINIUM  
A CONDOMINIUM



NOTES:

1. (301) INDICATES UNIT NUMBER.
2. THIRD FLOOR FINISHED FLOOR ELEVATION IS 34.83 FEET.
3. THIRD FLOOR FINISHED CEILING ELEVATION IS 42.83 FEET.
4. ELEVATIONS SHOWN HEREON ARE BASED ON NATIONAL GEODETIC VERTICAL DATUM.
5. ALL AREAS OF IMPROVEMENTS EXCLUSIVE OF THE UNITS AND THOSE AREAS SHOWN AS LIMITED COMMON ELEMENTS, ARE COMMON ELEMENTS OF THE CONDOMINIUM.
6. SEE SHEET 2 OF 11 FOR THE LOCATION OF THIS BUILDING WITHIN THE CONDOMINIUM.
7. SEE SHEETS 10 AND 11 OF 11 FOR TYPICAL UNIT PLANS.
8. BALCONIES SHOWN HEREON ARE LIMITED COMMON ELEMENTS FOR THE EXCLUSIVE USE OF THE UNITS CONTIGUOUS WITH SAID BALCONIES.

THIRD FLOOR PLAN

EXHIBIT "A"

JULY 23, 1984



32 N. ORLANDO AVE.  
COCOA BEACH, FL. 32931  
305/799-1012

SHEET 7 OF 11

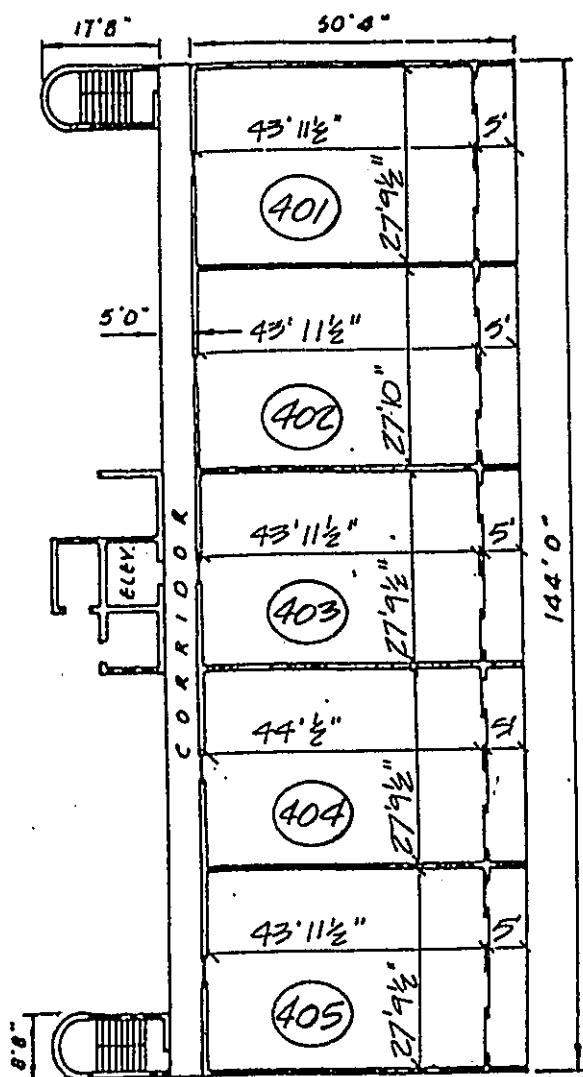
OFF. REC.

PAGE

2912

0257

BOARDWALK CONDOMINIUM  
A CONDOMINIUM



NOTES:

1. (401) INDICATES UNIT NUMBER.
2. FOURTH FLOOR FINISHED FLOOR ELEVATION IS 43.66 FEET.
3. FOURTH FLOOR FINISHED CEILING ELEVATION IS 51.60 FEET.
4. ELEVATIONS SHOWN HEREON ARE BASED ON NATIONAL GEODETIC VERTICAL DATUM.
5. ALL AREAS OF IMPROVEMENTS EXCLUSIVE OF THE UNITS AND THOSE AREAS SHOWN AS LIMITED COMMON ELEMENTS, ARE COMMON ELEMENTS OF THE CONDOMINIUM.
6. SEE SHEET 2 OF 11 FOR THE LOCATION OF THIS BUILDING WITHIN THE CONDOMINIUM.
7. SEE SHEETS 10 AND 11 OF 11 FOR TYPICAL UNIT PLANS.
8. BALCONIES SHOWN HEREON ARE LIMITED COMMON ELEMENTS FOR THE EXCLUSIVE USE OF THE UNITS CONTIGUOUS WITH SAID BALCONIES.

FOURTH FLOOR PLAN

EXHIBIT "A"

JULY 23, 1984



32 N. ORLANDO AVE.  
COCOA BEACH, FL. 32931  
305/799-1012

SHEET 8 OF 11

OFF. REC.

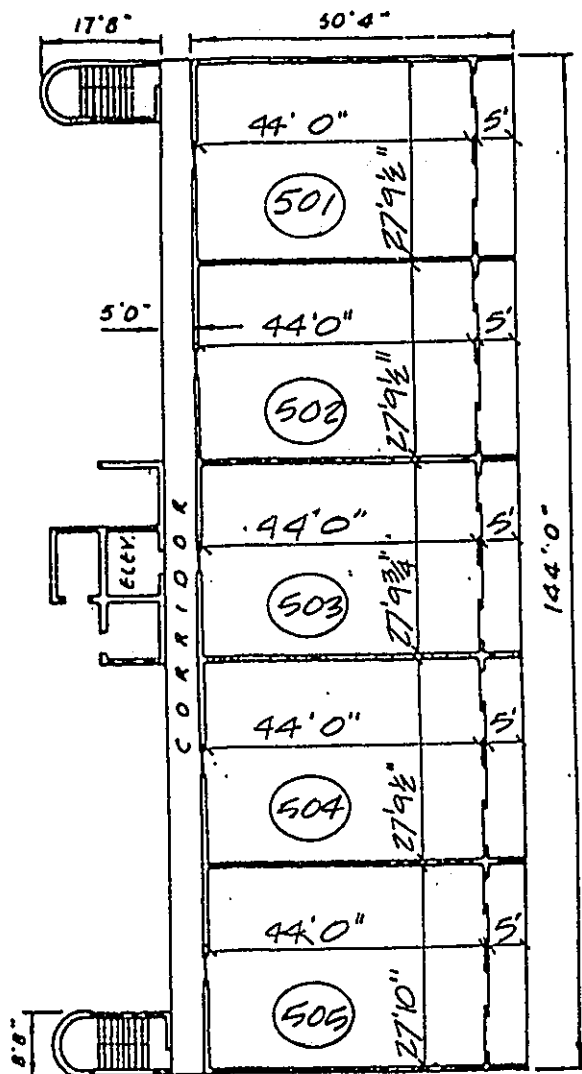
PAGE

2912

0258

BOARDWALK CONDOMINIUM  
A CONDOMINIUM

SCALE 1"=30'  
N



NOTES:

1. (501) INDICATES UNIT NUMBER.
2. FIFTH FLOOR FINISHED FLOOR ELEVATION IS 52.50 FEET.
3. FIFTH FLOOR FINISHED CEILING ELEVATION IS 60.50 FEET.
4. ELEVATIONS SHOWN HEREON ARE BASED ON NATIONAL GEODETIC VERTICAL DATUM.
5. ALL AREAS OF IMPROVEMENTS EXCLUSIVE OF THE UNITS AND THOSE AREAS SHOWN AS LIMITED COMMON ELEMENTS, ARE COMMON ELEMENTS OF THE CONDOMINIUM.
6. SEE SHEET 2 OF 11 FOR THE LOCATION OF THIS BUILDING WITHIN THE CONDOMINIUM.
7. SEE SHEETS 10 AND 11 OF 11 FOR TYPICAL UNIT PLANS.
8. BALCONIES SHOWN HEREON ARE LIMITED COMMON ELEMENTS FOR THE EXCLUSIVE USE OF THE UNITS CONTIGUOUS WITH SAID BALCONIES.

FIFTH FLOOR PLAN

EXHIBIT "A"

JULY 23, 1984

**adecorp**

32 N. ORLANDO AVE.  
COCOA BEACH, FL. 32931  
305/799-1012

SHEET 9 OF 11

OFF. REC.

PAGE

2912

0259